

# Montgomery County, Maryland PUBLIC SAFETY COMMUNICATIONS CENTER



9-1-1 POLICE  
EMERGENCY COMMUNICATIONS CENTER



FIRE & RESCUE  
EMERGENCY COMMUNICATIONS CENTER



TRANSPORTATION MANAGEMENT CENTER



HOMELAND SECURITY  
EMERGENCY OPERATIONS CENTER  
OFFICE OF EMERGENCY MANAGEMENT



DEPARTMENT OF TECHNOLOGY SERVICES

# ECC/TMC/EOC Co-location



- Fosters personal relationships
- Face to face coordination improves incident response
- Video and data sharing more easily accomplished
- Sharing of critical facility infrastructure saves money
- Quicker reaction to rapidly changing situations



# ECC OPS Floor

## Traffic Integration Points



- Traffic Camera Layer within Computer Aided Dispatch (CAD) Map
- Shared Access to Cameras/Controls

# Incident Response



- Coordinated incident response
  - Direct Phone Lines
  - Traffic Signal Control
- Shared resources easily identified and more quickly mobilized
- Share individual perspectives on situational awareness

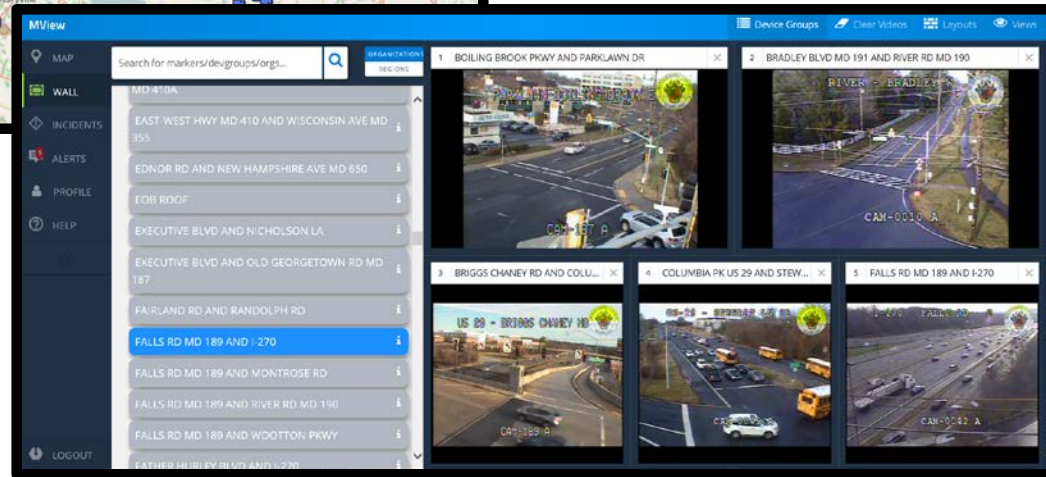
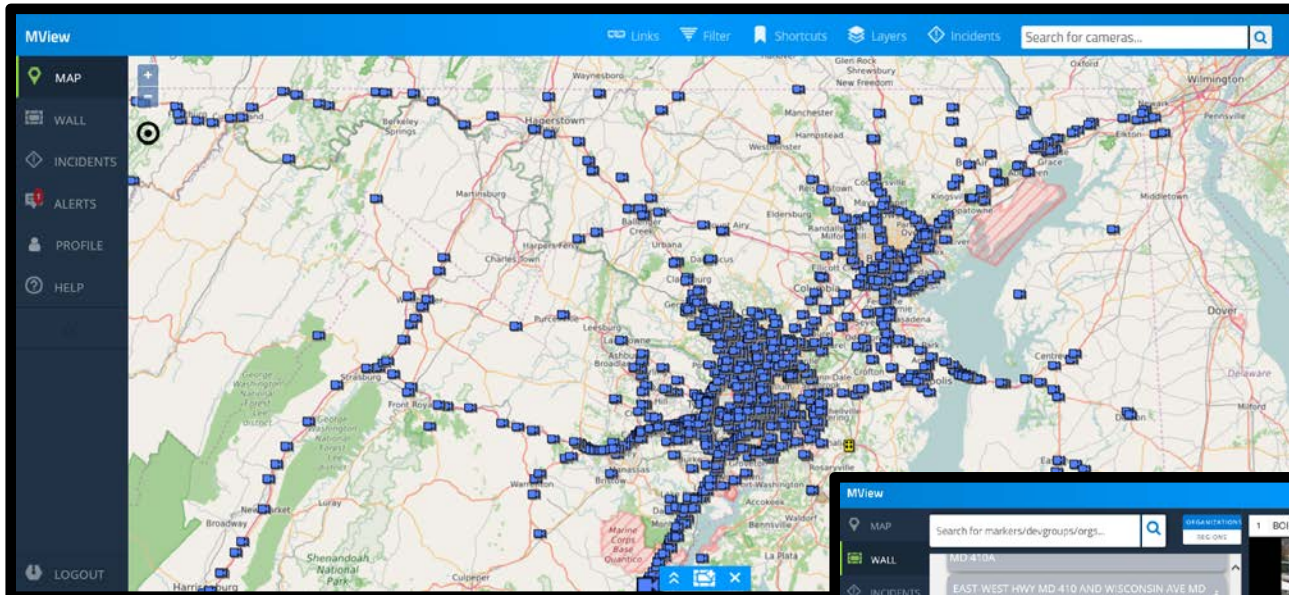


# EOC Activations



- Each agency has direct access to its EOC rep during activations
- EOC incident coordination meetings may be attended in person without losing time for travel
- Police/Fire and DOT reps have personal access to their Ops floors as needed

# Other Applications



- MView
- MDChart/RTIS
- Public Safety Messaging

**\*\*CAD CRITICAL EVENT MESSAGE\*\***

CAD MESSAGE: **ROAD CLOSURE** GEORGIA AVE / CONN AVE  
LARGE WATER MAIN BREAK WSSC IS BEING CONTACTED  
PLEASE AVIOD THIS AREA 4K2/342 TLK GRP A4 // ECC 11900

**\*\*\*FOUO/ Public Safety Sensitive Information\*\*\***

Powered by the Montgomery County Emergency Network (MCEN) - FOR OFFICIAL USE ONLY

# Future Opportunities

- TMC use of Public Safety CAD
- Integration of Real Time Traffic Data into CAD

# *Bill Ferretti*

*Director, 9-1-1 Emergency Communication Center*

*Department of Police*

*Montgomery County, Maryland*

*Phone: (240) 773-7026*